

Network Chair/s Expression of Interest: Child Development and Disability Network, and the Cerebral Palsy Network are integrating into one Network.

Expression of Interest to Chair/s the Neurodevelopmental Network:

We are seeking a health professional to lead this newly forming integrated Network. You will have experience working in the disability sector in Aotearoa. Understanding and experience of membership within the PSNZ and Clinical Networks will be helpful. This is an evolving Network. Leadership is required to prioritise realistic work plans annually to achieve do-able work to promote a range of services for tamariki and rangatahi with neurodevelopmental divergence.

We are seeking person/s with leadership experience and current context for the delivery of services for the neuro divergent community including complex pathways and gaps in service provision to transition the Child Development and Disability Network, and the Cerebral Palsy Network into one overarching Network.

The Chair/s will be responsible for ensuring the Network structure provides a mechanism within the PSNZ for organisations to have a clear pathway of engagement. This will be particularly relevant for engaging with the newly formed systems; in particular Whaikaha – Ministry for Disabled People.

The disability sector is an area of complex service pathways in Aotearoa as whānau navigate a range of personal health, disability and education services.

Health Services for people with neuro developmental divergence often have first point of contact in health with allied health professionals. Therefore we are encouraging both allied health leaders and clinical leaders to apply. The role of Chair may require two people to work in a partnership approach.

Networks receive funding from Te Whatu Ora to improve the delivery of services for whānau across a range of health settings. Reference Groups include a multi-disciplinary group of people from a range of health settings and from across the motu.

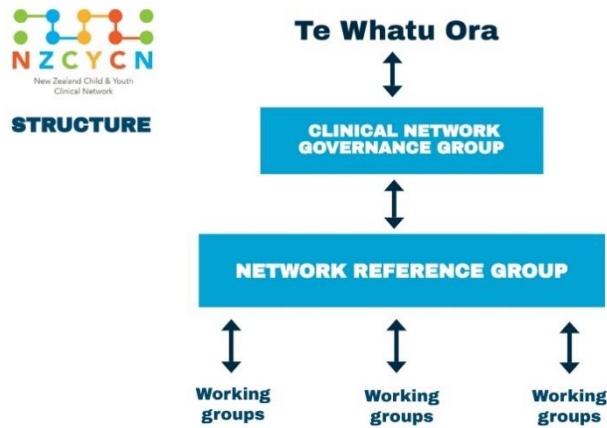
The Network Reference Group will support the Chair to develop Terms of Reference, supported by a Project Coordinator and the Clinical Network Governance Group.

It is anticipated that the current membership within the Disability Special Interest Group (SIG) will become part of the broader Neurodevelopmental Network over time. The Chair will ensure experts from other sectors and areas of specialist interest are engaged to advise when required.

Networks are encouraged to strengthen the emphasis on delivering the PSNZ Strategy which includes focusing on Te Tiriti o Waitangi and principles of equity as a priority. We have contracted a Māori Programme Manager who will support Networks to move in this direction.

Engagement with what matters for whānau, Enabling Good Lives Principles and Whaikaha will be central to the mahi.

The proposed structure is outlined below.



Who we are looking for: If you are a health professional with leadership experience working in the disability sector in Aotearoa, are an enthusiastic, positive person who thrives on a challenge and works collaboratively then please apply.

If this role interests you please apply by sending your CV and writing a short paragraph in an email outlining your experience. This is an exciting opportunity to influence workforce education, support the delivery of whānau responsive service provision and a range of other activities.

If you require further information please email kat.kirchmann@paediatrics.org.nz
Please send your EOI to Kat Kirchmann by Friday 26 May, 2023.